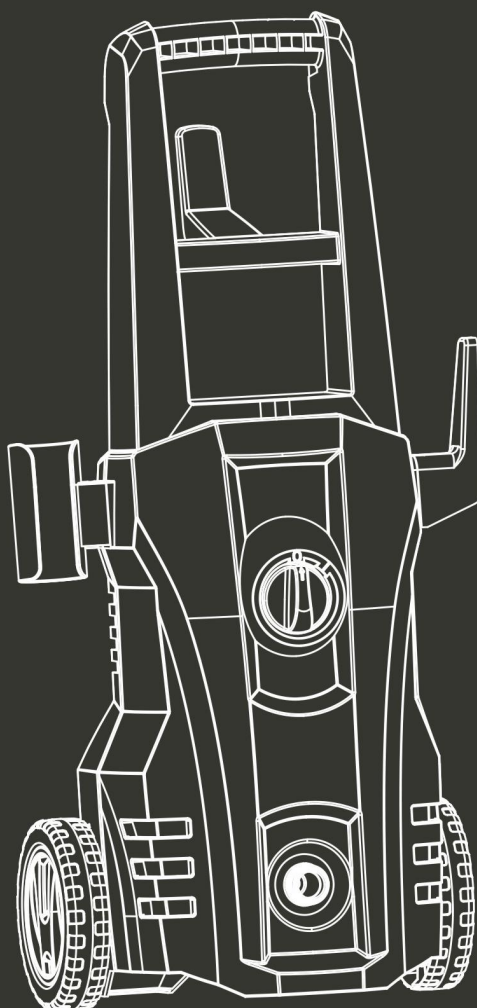


**HYUNDAI**  
POWER PRODUCTS

**ELECTRIC PRESSURE WASHER**  
**HNHP1412**

**ORIGINAL INSTRUCTIONS**



**CAUTION:** Read the instructions before using the machine!

## CONTENTS

---

1. SAFETY INSTRUCTIONS.....	3
2. DESCRIPTION OF THE APPLIANCE.....	11
3. TECHNICAL SPECIFICATIONS.....	12
4. ASSEMBLY.....	13
5. OPERATION.....	17
6. TRANSPORT.....	19
7. STORAGE.....	19
8. CARE AND MAINTENANCE.....	20
9. DISPOSAL.....	20
10.TROUBLESHOOTING.....	21
11.DECLARATION OF CONFORMITY.....	22
12.WARRANTY.....	23
13.PRODUCT FAILURE.....	24
14.WARRANTY EXCLUSIONS.....	25

# 1.SAFETY INSTRUCTIONS

---

- Use this unit as described in this manual. Any mishandling and any use contrary to instructions for use shall in no case be the responsibility of the manufacturer.
- Failure to observe the safety and operating instructions may result in a risk of electric shock, fire and / or personal injury.
- If you are giving this unit to another person, please also provide this manual.
- Do not use attachments other than those recommended by the manufacturer; they can damage the unit and / or cause injury.
- Machines shall not be used by children. Children should be supervised to ensure that they do not play with the appliance.
- This machine can be used by people with reduced physical, sensory or mental capabilities or lack of experience and knowledge if they have been given supervision or instruction concerning use of the machine in a safe way and understand the hazards involved.
- Children shall not play with the appliance.
- If the supply cord is damaged, it must be replaced by the manufacturer, its service agent or similarly qualified persons in order to avoid a hazard.
- Before any connection, check:
  - The appliance, power cable and accessories are not damaged. In this case, do not use the appliance and take it to your dealer for inspection and repair.
  - The voltage indicated on the rating plate of the

appliance corresponds to that of your electrical installation.

- Do not disassemble the device yourself. Any disassembly, repair or inspection should be carried out exclusively by a qualified person.
- Do not touch the plug with wet hands. Do not allow the plug to fall into the water.
- Do not walk on the power cord, do not exert excessive pressure, or pull on the cord to avoid damage.
- **WARNING:** This machine has been designed for use with a cleaning agent supplied or recommended by the manufacturer. Use of other cleaning or chemical agents may affect the safety of the machine.
- **WARNING:** High pressure jets can be dangerous if subject to misuse. The jet must not be directed at persons, live electrical equipment or the machine itself.
- **WARNING:** Do not use the machine within range of persons unless they wear protective clothing
- **WARNING:** Do not direct the jet against yourself or others in order to clean clothes or footwear.
- **WARNING:** Risk of explosion. Do not spray flammable liquids.
- **WARNING:** High pressure cleaners shall not be used by children or untrained personnel.
- **WARNING:** High pressure hoses, fittings and couplings are important for the safety of the machine. Use only hoses, fittings and couplings recommended by the manufacturer.
- **WARNING:** To ensure the safety of the machine,

use only the original manufacturer's parts or approved by the manufacturer.

- WARNING: Water that has flowed through backflow preventers is considered to be non-potable.
- WARNING: The machine must be disconnected from the power supply during cleaning or maintenance and when replacing parts or converting the machine to other functions by removing the power source plug.
- WARNING: Do not use the machine if a supply cord or important parts of the machine are damaged, e.g. safety devices, high pressure hoses, trigger gun.
- WARNING: If an extension cord is used, the plug and cable must be watertight.
- WARNING: Inadequate extension cords can be dangerous. If an extension cord is used, it shall be suitable for outdoor use, and the connection has to be kept dry and off the ground. It is recommended that this is accomplished by means of a cord reel which keeps the socket at least 60 mm above the ground.
- WARNING: Ensure that any exhaust emissions are not in the vicinity of air intakes.
- WARNING Always switch off the mains disconnecting switch when leaving the machine unattended.
- Children, animals and persons not participating in the use of the machine must remain at a minimum distance of 10 meters from the sprayer.
- The high pressure hose must remain connected to the appliance as long as the system is under pressure.

- Do not use corrosive or flammable liquids in the machine.
- The appliance must be connected to a water supply using a new set of hoses; the old pipe set must not be reused.
- When using the machine, wear protective equipment including safety goggles, safety shoes, safety gloves, safety helmet with visor and double-insulated hearing protection.
- In order to move the unit easily, bend the lance.
- Make sure the unit is turned off and unplugged before transporting the unit.
- The connection to the power supply must be made by a qualified electrician in accordance with IEC60364-1. It is recommended that the power supply of this machine includes a residual current device that interrupts power if the earth leakage exceeds 30 mA for 30 ms or a device that will homologate the earth circuit.
- Before assembling, dismantling, repairing, transporting, servicing and storing, check if the appliance is disconnected from the power supply.
- Handle the unit with care, do not drop it.
- Do not use the machine in extreme weather conditions, when it is very cold. Do not use the machine with ice water.
- Use the tool in a stable and plane location.
- The inlet hose can be connected to the water mains with a maximum pressure of 10 bars.
- **WARNING:** In order to avoid any danger due to the accidental reset of the thermal circuit breaker, this device must not be powered via an external switch,

such as a timer, or be connected to a circuit which is regularly connected switched on and off by the electricity supplier.

- The appliance must not be connected to potable water supply.
- When transporting the machine, take note of its weight. Do not overestimate your efforts and get help if necessary.
- The machine must be transported from one point to another and disconnected. Always use the handle to push the machine.
- Use the handle to lift the machine.
- Improper transport of the machine may result accidents and injuries.
- Do not use the tool where dangerous situations or accidents may occur. Do not use it indoor, in places where are exhausted gases, etc.
- In case of accidents or breakdowns, stop to use the tool, switch off it and unplug it. Check the conditions of the tool and bring it to a service agent for inspection and reparation if necessary.
- When opening the trigger gun, pay attention to the kickback force. The power of the gun can cause a kickback and can produce a loss of control of the gun and create accidents and injuries. Hold the gun firmly, and with both hands if possible.
- **WARNING** Always switch off the mains disconnecting switch when leaving the machine unattended.
- To avoid dangerous situations in the event of an accident (for example, contact with or spill of detergents) or equipment failure (such as a



puncture or a component failure): stop to use the machine immediately. Check the problem. Have the machine inspected by a qualified technician. In the event of an overflow, move the machine away and clean the overflow.

- During use, transport, assembly, disassembly, in case of failure, during foreseeable tests or breakdowns, the tool must always remain upright.

## **Residual risks**

Even if you are operating this product in accordance with all the safety requirements, potential risks of injury and damage remain. The following dangers can arise in connection with the structure and design of this product:

- Health defects resulting from vibration emission if the product is being used over long periods of time or not adequately managed and properly maintained
- Danger of injury and property damage caused by flying objects.
- Injuries and damage to property due to broken accessories or the sudden impact of hidden objects during use.

## **Intended use**

Your PRESSURE CLEANER can perform a myriad of tasks in the house and in the garden. It effectively cleans a wide variety of surfaces.

Your PRESSURE CLEANER is designed to operate



from a cold water supply.

It operates efficiently with water whose temperature is between 5 and 60 degrees.

Your PRESSURE CLEANER has been designed for outdoor use only on materials such as stone, wood and plastics. Please check, before use, whether materials can be cleaned with your sprayer; the manufacturer cannot be held responsible for any damage resulting from improper use.

The main applications of this product are household cleaning tasks such as:

- Cars, motorcycles, bicycles;
- Patios, fences, garden walls, pathways, garages and facades of houses;
- To remove algae and mosses from roofs, brick walls and gutters;
- For cleaning of gardening tools and machinery, furniture and grills;
- For hygiene and maintenance of kennels, stables, etc. and their surroundings;

It is especially useful for cleaning muddy sidings.

The sprayer alone is capable of performing most of the garden cleaning tasks or on buildings. The detergent is

useful for cleaning vehicles and other painted surfaces.

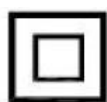
## Symbols



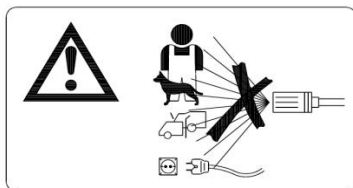
Read the instruction manual



Complies with applicable European standards and directives



Protection class II. This means that the device is equipped with double insulation. A plug to connect to the ground is not necessary



**WARNING!** The jet should not be directed to persons, animals, live devices or the device itself.



This machine is not suitable for connection to a drinking water supply.

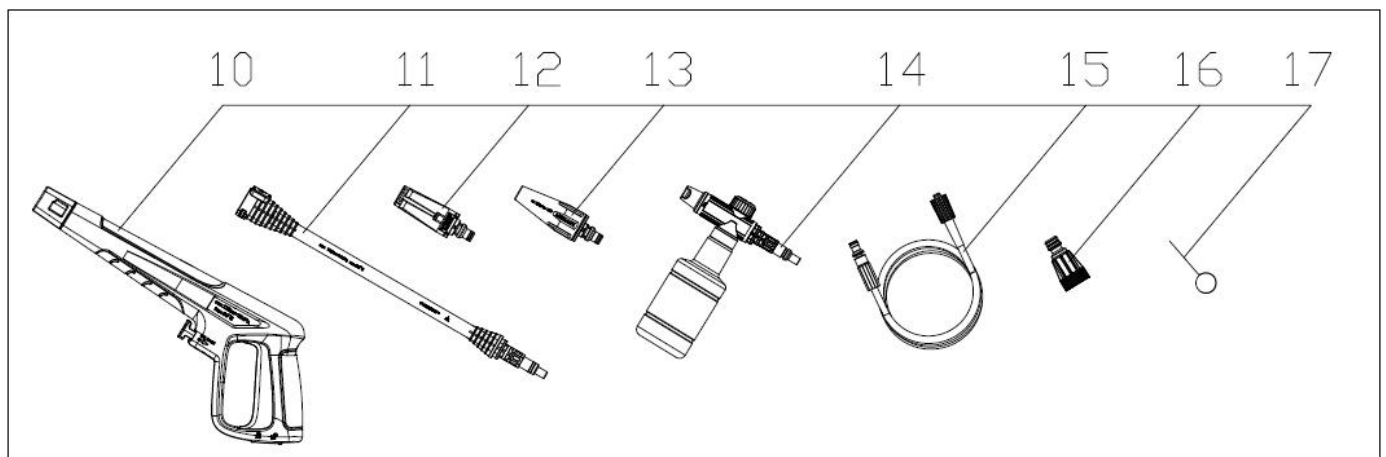
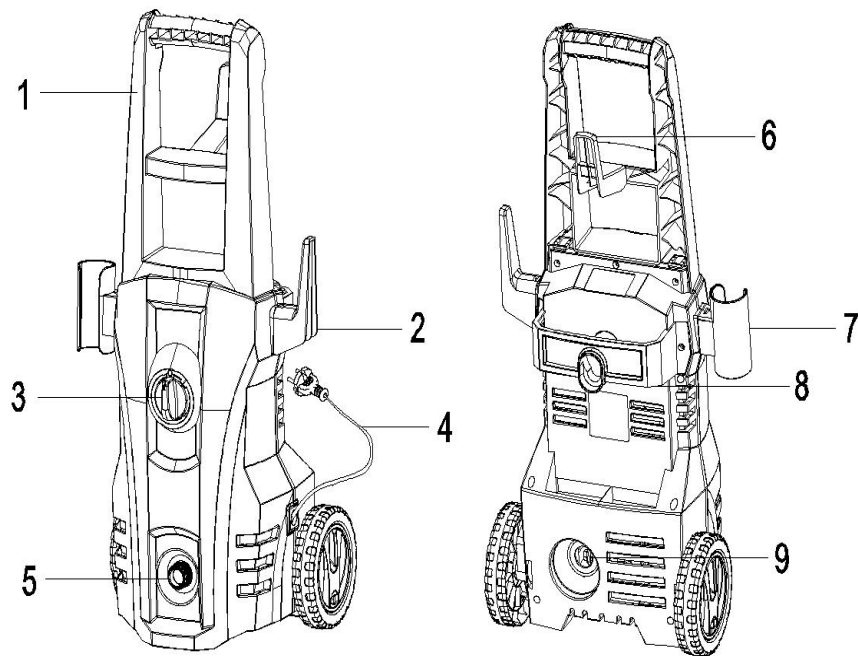


Sound power level guaranteed



Wear ocular protection

## 2. DESCRIPTION OF THE APPLIANCE



1. Handle

2. Power cord hook

3. Power switch

4. Power cord

5. Water inlet

6. High-pressure hose hook

7. Trigger gun holder

8. Spray wand holder

9. Water outlet

10. Spray gun

11. Spray lance

12 multiple jet nozzle

13 Linear jet nozzle

14 Detergent bottle

15 High pressure hose

16. Water inlet connector

17. Nozzle cleaning tool

### 3. TECHNICAL SPECIFICATIONS

---

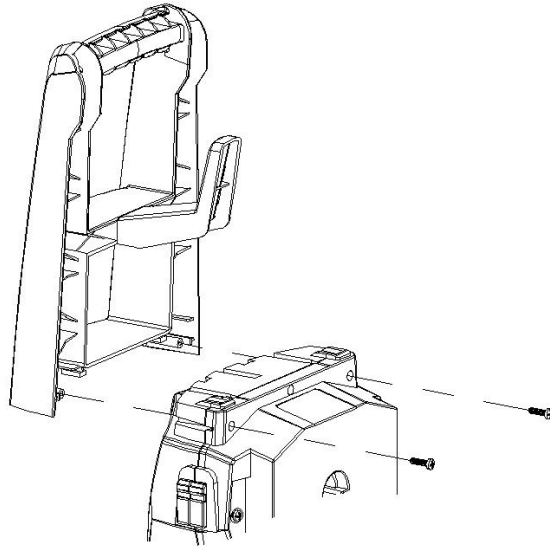
Voltage	220-240V~
Frequency	50/60Hz
Power	1400W
Protection Class	IPX5
Rated pressure	8 Mpa
Allowable pressure	12 Mpa
Rated flow	6l/min
Max. flow	7.2l/min
Max. inlet pressure:	0,7 Mpa
Sound power level	Lwa: 90 dB(A)
Sound pressure level	Lpa: 73 dB(A) K= 3 dB(A)
Vibration	3 m/s <sup>2</sup> K= 1,5 dB(A)
Weight of tool	5,8 kg

## 4. ASSEMBLY

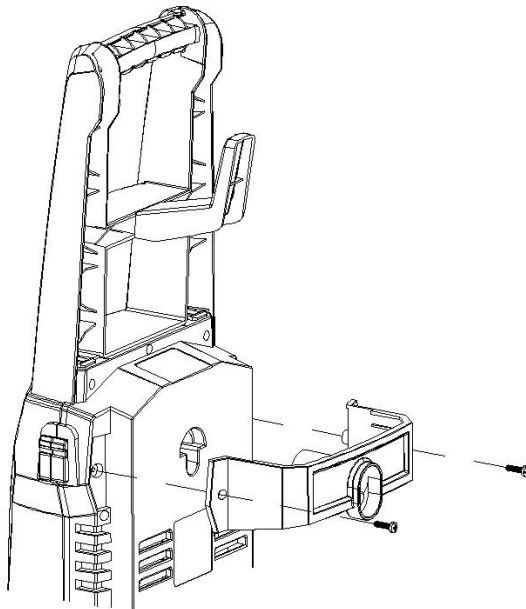
---

Mount loose parts delivered with appliance prior to start-up

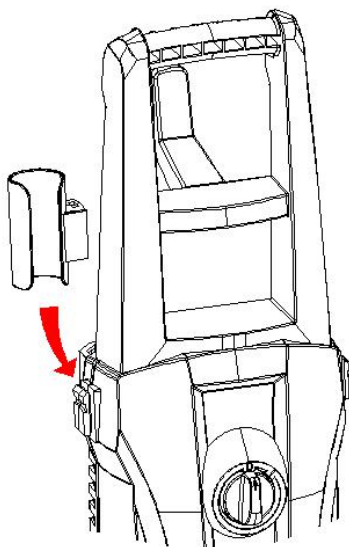
1) Installing the handle with two screws.



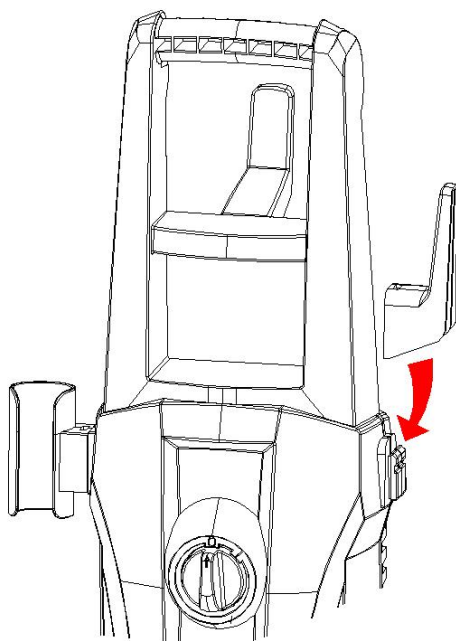
2) Installing the Spray wand holder with two screws.



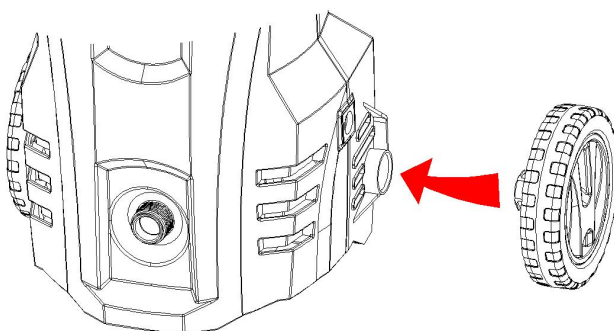
3) Slide the trigger gun holder on the side of the machine.



4). Slide the power cord hook on the other side of the machine.

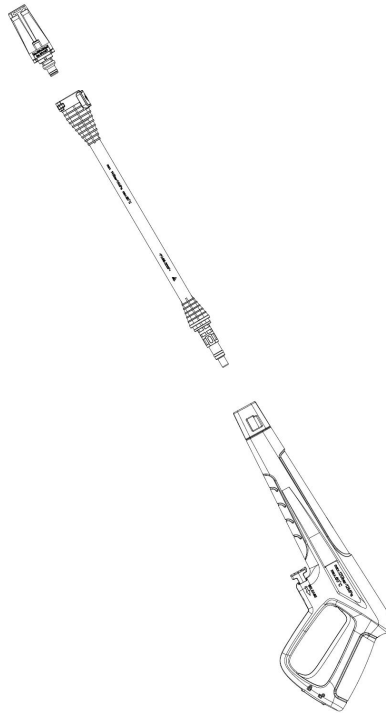


5). Installing the two wheels.



## 6) Installing the spray lance and the nozzle

- Fit the spray lance into the gun and rotate it until the two parts are completely locked.
- Insert the desired nozzle in the spray lance until heard a click.

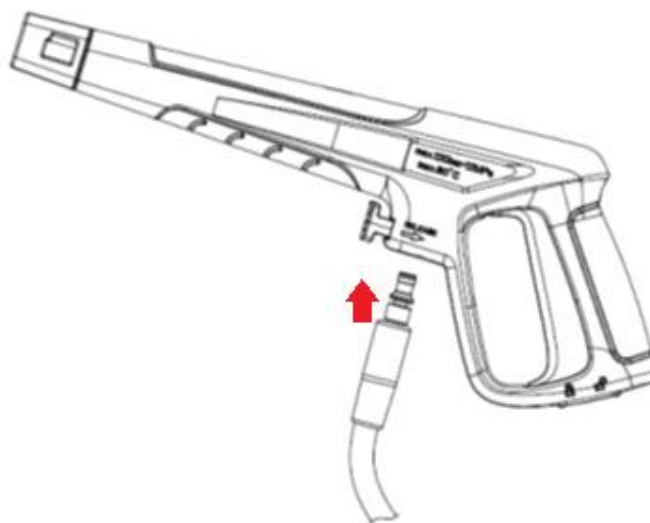


To disassemble the spray lance and the nozzle:

- Make sure that the appliance is switched off and unplug.
- Push and hold the button PUSH and then pull out the nozzle.
- Turn the spray lance and pull it out from the spray gun.

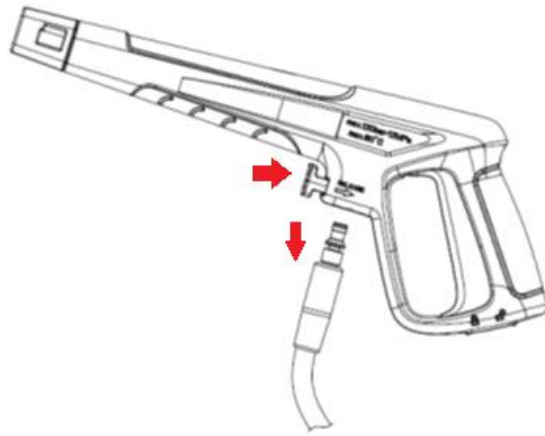
## 7) Connect the high pressure hose to the spray gun

- Insert the hose into the spray handle until heard a click.



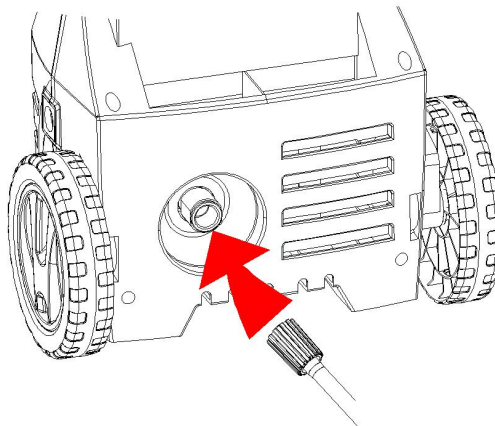
To remove the hose, switch off and unplug the appliance. Push the release button and pull out the hose.





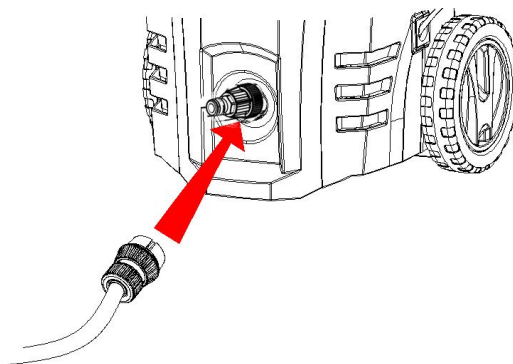
### 8) Connect the high-pressure hose to the water outlet

Connect the other end of the high-pressure hose to the water outlet on the washer and twist the black rotatable end-piece as indicated to secure the connection.



### 9). Connect the garden hose to the water inlet

Connect the garden hose adaptor (female coupler) to the water inlet of the pressure washer, and then thread (or push) your garden hose (male end) into the garden hose adaptor.



The minimum recommended length for the water supply pipe is 10 meters (but not more than 25 meters) with a diameter of 12.5 mm to avoid back pressure and any potential damage to your appliance. Make sure it can withstand water and a maximum pressure of 10bar (0.1Mpa). If you want to connect your device to other water sources, make sure the maximum water inlet pressure is 10bar (0.1Mpa).

## 5. OPERATION

---

### a. Before starting the machine

**NOTE: Never operate the sprayer without first opening the water supply!**

Do not use the sprayer in dangerous environments and in places where explosive substances are stored.

Do not put water in materials containing asbestos and other materials that can be dangerous to health

Do not use liquids containing organic solvents, oil-based acids or solvent, paint or oil having highly flammable, explosive and toxic vapors. Compounds like acetone, acids and solvents are corrosive and may damage the device.

Open the tap, but do not start the machine immediately.

Press the gun trigger until the air has been expelled from the sprayer and water begins to flow. Once the water begins to flow to the nozzle, release the trigger. The sprayer is now running. Now you can turn the machine on.

### b. Start/Stop

Turn the power switch to I (ON).

Press the gun trigger to start working.

Release the trigger to temporarily stop working and then re-press it to start again. .

Unroll the hose by rotate the hose reel based on the washing distance required.

**If you need to stop using the device for more than 2 minutes, please turn it off.**

At the end of the operation, release the trigger.

Turn off the machine by turning the power switch on the 0 position (OFF) and unplug the power. Press the gun trigger to release pressure inside.

**NOTE: The gun has a locking device, located on the bottom of the gun. Press the lock button and the trigger will be locked.**

### c. Use of the nozzle

#### Linear jet nozzle

Use the linear jet nozzle to clean large wall areas and floors. For example, you can effectively remove algae or moss from outdoor surfaces.

#### Variable jet nozzle

The variable jet nozzle is a multifunction nozzle which allows varying the power of the jet of your cleaner so as to be able to strip the shutters of your house, wash your car or spray an anti-moss on the paving stones of your driveway.

Turn the nozzle head counter clockwise to reduce the angle of the jet until you obtain a straight jet which will have a greater impact on the item to be cleaned but with a reduced working area.

Turn the nozzle head clockwise. This will give you a wider flat spray, but with less impact.

#### d. Operation with detergent

**NOTE:**

**Detergent can only be added when the device is operated in low pressure mode.**

**Make sure that the machine is switched off before filling the bottle and install the bottle to the machine.**

**Detergents can be purchased in gardening stores and on the web.**

Rotate the head to open the bottle. Pour the detergent and water into the bottle.

Close the bottle and connect it to the gun body. Squeeze the bottle head into the hole of the gun body and rotate the head until it is perfectly matched. The rotary knob on top of the bottle can be turned to change the thickness of soap.

The use of detergent may help reducing the working time and contribute removing stubborn dirt. Some detergents are specially designed to be used with high-pressure cleaners for specific cleaning operations. The viscosity of these detergents is close to that of water. If you use detergents having a higher viscosity, for instance a dishwashing liquid, the detergent injection system may clog and you will not be able to spray the detergent.

Detergents can clean a surface only if they are applied long enough on the surface so that their chemical agents may degrade dirt and grime. They are most effective if they are applied at low pressure.

The combination of the action of the chemical agents and rinsing with high pressure is very effective in removing dirt. On vertical surfaces, apply the detergent starting from the bottom moving upwards. This will prevent the detergent flowing downwards and forming trails. Similarly, you need to rinse the surface from the bottom upwards.

To remove particularly stubborn dirt, using a brush in a combination with a detergent and a high-pressure rinse may be necessary.

The next cleaning procedure will help you to better organize your cleaning and obtain optimal results in minimum time:

- A. Before starting, prepare the surface to be cleaned; remove furniture from the working area and ensure windows and doors are properly closed. Protect or remove any hazardous materials and any object that may be damaged.
- B. Then spray the surface to be cleaned with the high-pressure water jet to remove dirt on the surface. Before you press the trigger adjust the nozzle for a cone jet and slowly adjust the shape of the jet until you get the desired result. Thus, you avoid spraying the surface with a jet that could be too powerful and could cause damage.
- C. Start the final rinse from the bottom of the surface moving upwards. Make sure rinsing the surface so that not even the slightest trace of detergent remains.

## 6. STORAGE

---



### MISE EN GARDE

Risk of personal injury or damage!

Take the weight of the appliance into account when storing it.

- Park the machine on a level surface.
- Disassemble the hoses, the nozzle, the lance and the gun according to the instructions given in this manual.
- Wind the power cable on its hook.
- Place the gun in its holder.
- Place in the lance and the buses in the rear storage of the machine.
- Always store the high-pressure washer, parts and accessories in a place inaccessible to children. The ideal storage temperature is between 10 ° C and 30 ° C. Store the machine indoors to prevent water in the unit from expanding in freezing conditions.
- We recommend that you use the original packaging for storage or cover the product with a suitable cloth or template to protect it from dust.

### Frost protection

#### ATTENTION

Appliance and accessories that are not completely drained can be destroyed by frost.

Completely drain appliance and accessories and protect them against frost. To avoid damage:

- Detach the appliance from the water supply.
- Detach spray lance from the trigger gun.
- Turn on the appliance.
- Push the lever of the trigger gun until no more water is escaping.
- Release the lever of the trigger gun.
- Lock the lever of the trigger gun.
- Turn off the appliance.
- Store the appliance and the entire accessories in a frost free room.

## 7. CARE AND MAINTENANCE

---



### DANGER

Risk of electric shock

Prior to all work on the appliance, switch off the appliance and pull the power plug.

### High pressure hose

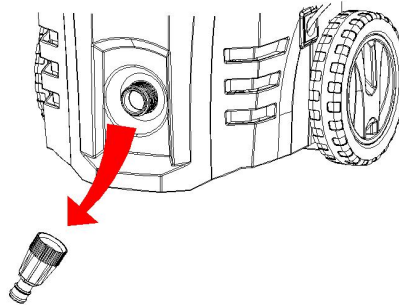
The high pressure hose is specially constructed with reinforced walls it can be easily damaged and should be stored carefully.

- Do not kink.
- Do not drive vehicles over the hose.
- Do not expose the hose to sharp edges or corners. Misuse will lead to ballooning or premature failure and will invalidate warranty.

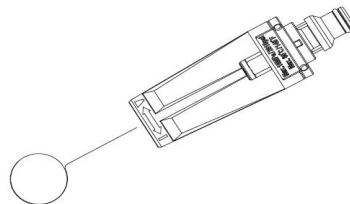
### Clean the sieve in the water connection

Clean the sieve in the water connection regularly.

Remove coupling from the water connection, and rinse with warm water to prevent any foreign matter from clogging the pump.



Clean the nozzle with the needle clean-out tool provided. Remove the spray lance from the gun. Remove any dirt from the nozzle hole and rinse.



### ATTENTION

- The sieve must not be damaged.
- Pull the sieve out using flat pliers.
- Clean the sieve under running water.
- Reinsert the sieve into the water connection.

## 8. DISPOSAL



Electrical products should not be discarded with household products. According to the European Directive 2012/19/EU on waste electrical and electronic equipment and its implementation into national law, electrical products used must be collected separately and disposed of at collection points provided for this purpose. Talk with your local authorities or dealer for advice on recycling.

## 9. TROUBLESHOOTING

Turn off the appliance and remove the main plug prior to performing any care and maintenance work. Repair work and work on the electrical components may not only be performed by an authorized customer service. You can rectify minor faults yourself with the help of the following overview. If in doubt, please consult the authorized customer service.

Symptom	Cause	Recommended action
Machine refuses to start	Machine not plugged in Defective socket Fuse has blown Defective extension cord	Plug in machine Try another socket. Replace fuse. Switch off other machines. Try without the extension cord.
Fluctuating pressure	Pump sucking air Valves dirty, worn out or stuck Pump seals worn out	Check that hoses and connections are airtight. Clean and replace or refer to local distributor Clean and replace or refer to local distributor
Machine stops	Incorrect mains voltage Thermal sensor activated Nozzle partially blocked	Check that the mains voltage corresponds to specification on the model tag. Leave the washer for 5 minutes to cool down. Clean the nozzle
Machine pulsating	Air in inlet hose Inadequate supply of mains water Nozzle partially blocked Water filter blocked Hose kinked	Allow machine to run with open trigger until regular working pressure resumes. Check that the water supply corresponds to specifications required NB! Avoid using long, thin hoses (min. 1/2"). Clean the nozzle /Clean the filter Straighten out hose.
Machine starts, but no water comes out	Pump/hoses or accessory frozen No water supply Water filter blocked /Nozzle blocked	Wait for pump/hoses or accessory to thaw. Connect inlet water. Clean the filter /Clean the nozzle

## 10.DECLARATION OF CONFORMITY

---



BUILDER SAS

ZI, 32 rue Aristide Bergès – 31270 Cugnaux - France

Declares that the machinery designated below:

ELECTRIC PRESSURE WASHER

Ref.: HNHP1412

Serial number: 20221212552-20221212851

Complies with the provisions of the Directive “machinery” 2006/42/EC and national laws transposing it:

Also complies with the following European directives:

EMC Directive 2014/30/EU

ROHS Directive (EU)2015/863 amending 2011/65/EU

Directive on environmental noise emissions from equipment intended for use outside buildings  
2000/14/EC

Guaranteed Sound Power Level: 90 dB(A)

Also complies with European standards, with national standards and the following technical provisions:

EN 60335-1:2012+A11:2014+A13:2017+A1:2019+A2:2019+A14:2019

EN60335-2-79:2012

EN 62233:2008

EN 55014-1:2017+A11:2020

EN 55014-2:2015

EN IEC61000-3-2:2019

EN 61000-3-3:2013+A1:2019

Cugnaux, on 27/10/2022

Philippe MARIE / PDG



## 11. WARRANTY

# HYUNDAI

## WARRANTY

The manufacturer guarantees the product against defects in material and workmanship for a period of 2 years from the date of the original purchase. The warranty only applies if the product is for household use. The warranty does not cover breakdowns due to normal wear and tear.

The manufacturer agrees to replace parts identified as defective by the designated distributor. The manufacturer does not accept responsibility for the replacement of the machine, in whole or in part, and/or ensuing damage.

### The warranty does not cover breakdowns due to:

- insufficient maintenance.
- abnormal assembly, adjustment or operations of the product.
- parts subject to normal wear and tear.

### The warranty does not extend to:

- shipping and packaging costs.
- using the tool for a purpose other than that for which it was designed.
- the use and maintenance of the machine done in a manner not described in the user manual.

Due to our policy of continuous product improvement, we reserve the right to alter or change specifications without notice. Consequently, the product may be different from the information contained therein, but a modification will be undertaken without notice if it is recognized as an improvement of the preceding characteristic.

### READ THE MANUAL CAREFULLY BEFORE USING THE MACHINE.

When ordering spare parts, please indicate the part number or code, you can find this in the spare parts list in this manual. Keep the purchase receipt; without it, the warranty is invalid. To help you with your product, we invite you to contact us by phone or via our website:

- **+33 (0)9.70.75.30.30**
- **<https://services.swap-europe.com/contact>**

You must create a "ticket" via the web platform.

- Register or create your account.
- Indicate the reference of the tool.
- Choose the subject of your request.
- Describe your problem.
- Attach these files: invoice or sales receipt, photo of the identification plate (serial number), photo of the part you need (for example: pins on the transformer plug which are broken).



# 12. PRODUCT FAILURE

## WHAT TO DO IF MY MACHINE BREAKS DOWN?

### **If you bought your product in a store:**

- a) Empty the fuel tank.
- b) Make sure that your machine is complete with all accessories supplied, and clean! If this is not the case, the repairer will refuse the machine.

Go to the store with the complete machine and with the receipt or invoice.

### **If you bought your product on a website:**

- a) Empty the fuel tank.
- b) Make sure that your machine is complete with all accessories supplied, and clean! If this is not the case, the repairer will refuse the machine.
- c) Create a SWAP-Europe service ticket on the site: <https://services.swap-europe.com> When making the request on SWAP-Europe, you must attach the invoice and the photo of the nameplate (serial number).
- d) Contact the repair station to make sure it is available before dropping off the machine.

Go to the repair station with the complete machine packed, accompanied by the purchase invoice and the station support sheet downloadable after the service request is completed on the SWAP-Europe site

For machines with engine failure from manufacturers BRIGGS & STRATTON, HONDA and RATO, please refer to the following instructions.

Repairs will be done by approved engine manufacturers of these manufacturers, see their site:

- <http://www.briggsandstratton.com/eu/fr>
- <http://www.honda-engines-eu.com/fr/service-network-page;jsessionid=5EE8456CF39CD572AA2AEEDFD290CDAE>
- <https://www.rato-europe.com/it/service-network>

**Please keep your original packaging to allow for after-sales service returns or pack your machine with a similar cardboard box of the same dimensions.**

**For any question concerning our after-sales service you can make a request on our website <https://services.swap-europe.com>**

**Our hotline remains available at +33 (9) 70 75 30 30.**



# 13. WARRANTY EXCLUSIONS

## THE WARRANTY DOES NOT COVER:

- Start-up and setting up of the product.
- Damage resulting from normal wear and tear of the product.
- Damage resulting from improper use of the product.
- Damage resulting from assembly or start-up not in accordance with the user manual.
- Breakdowns related to carburetion beyond 90 days and fouling of carburetors.
- Periodic and standard maintenance events.
- Actions of modification and dismantling that directly void the warranty.
- Products whose original authentication marking (brand, serial number) has been degraded, altered or withdrawn.
- Replacement of consumables.
- The use of non-original parts.
- Breakage of parts following impacts or projections.
- Accessories breakdowns.
- Defects and their consequences linked to any external cause.
- Loss of components and loss due to insufficient screwing.
- Cutting components and any damage related to the loosening of parts.
- Overload or overheating.
- Poor power supply quality: faulty voltage, voltage error, etc.
- Damages resulting from the deprivation of enjoyment of the product during the time necessary for repairs and more generally the costs related to the immobilization of the product.
- The costs of a second opinion established by a third party following an estimate by a SWAP-Europe repair station
- The use of a product which would show a defect or a breakage which was not the subject of an immediate report and/or repair with the services of SWAP-Europe.
- Deterioration linked to transport and storage\*.
- Launchers beyond 90 days.
- Oil, petrol, grease.
- Damages related to the use of non-compliant fuels or lubricants.

\* In accordance with transport legislation, damage related to transport must be declared to carriers within 48 hours maximum after observation by registered letter with acknowledgement of receipt.

This document is a supplement to your notice, a non-exhaustive list.

**Attention:** all orders must be checked in the presence of the delivery person. In case of refusal by the delivery person, it you must simply refuse the delivery and notify your refusal.

**Reminder:** the reserves do not exclude the notification by registered letter with acknowledgement within 72 hours.

### Information:

Thermal devices must be wintered each season (service available on the SWAP-Europe site). Batteries must be charged before being stored.

**HYUNDAI**  
POWER PRODUCTS

**For Inquiries, please contact:**

BUILDER SAS  
32, Rue Aristide Bergès Z1 31270 Cugnaux, France  
Tél.: +33(0)5.34.502.502 Fax : +33(0)5.34.502.503  
<http://www.hyundai-power-fr.com/>  
Fabriqué en République Populaire de Chine(PRC)